

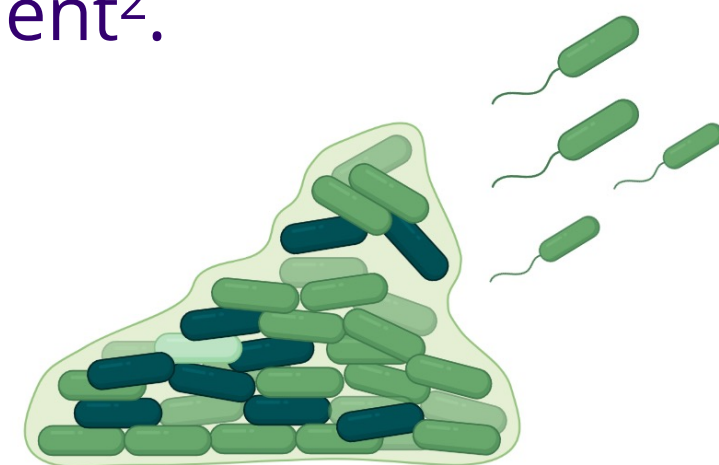
# The effect of rugose small colony variants on *Pseudomonas aeruginosa* biofilm dispersion



Angel Reddy, Dr. Courtney Kleeschulte, Dr. Matthew Parsek

## Introduction

*Pseudomonas aeruginosa* are pathogenic bacteria that infect the blood, lungs, and other parts of the body after surgery<sup>1</sup>. They are the source of chronic infections in patients diagnosed with cystic fibrosis. They exist primarily in biofilms, which are structured, bacterial communities that provide the bacteria with protection and nutrients. Bacteria leave the biofilm during dispersion, the final stage of biofilm development<sup>2</sup>.



**Figure 1.** Dispersion<sup>3</sup>. Bacteria leave the biofilm to colonize other surfaces and/or find better conditions during dispersion. Signals related to external and internal stressors cause subpopulations of the bacteria to leave the biofilm.

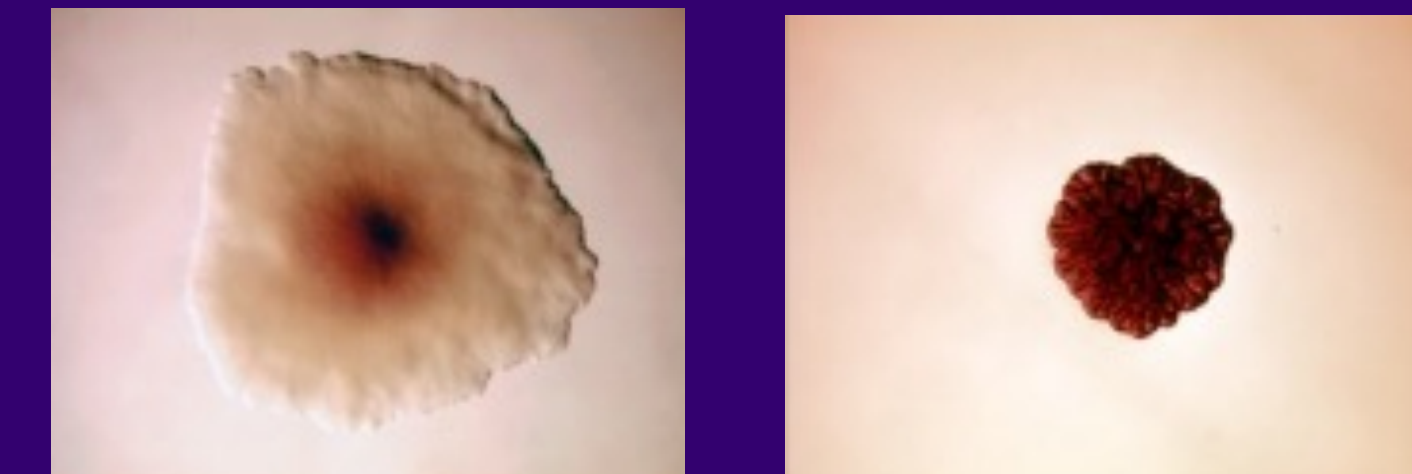
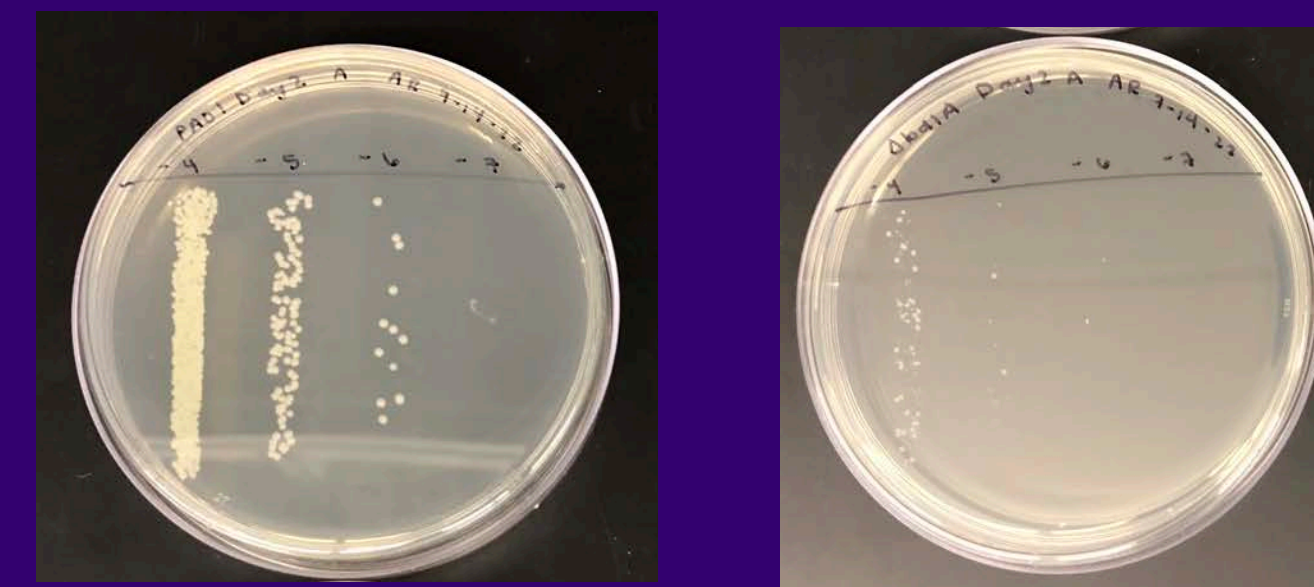
## Methods



**Figure 2.** Tube reactor system. The tube reactor system is an apparatus used to study biofilms. A source of nutrients is continually pumped through several lines of tubing where it is emptied into waste carboys. Bacteria are injected into the tubing and allowed to grow over several days until they are ready to be harvested.

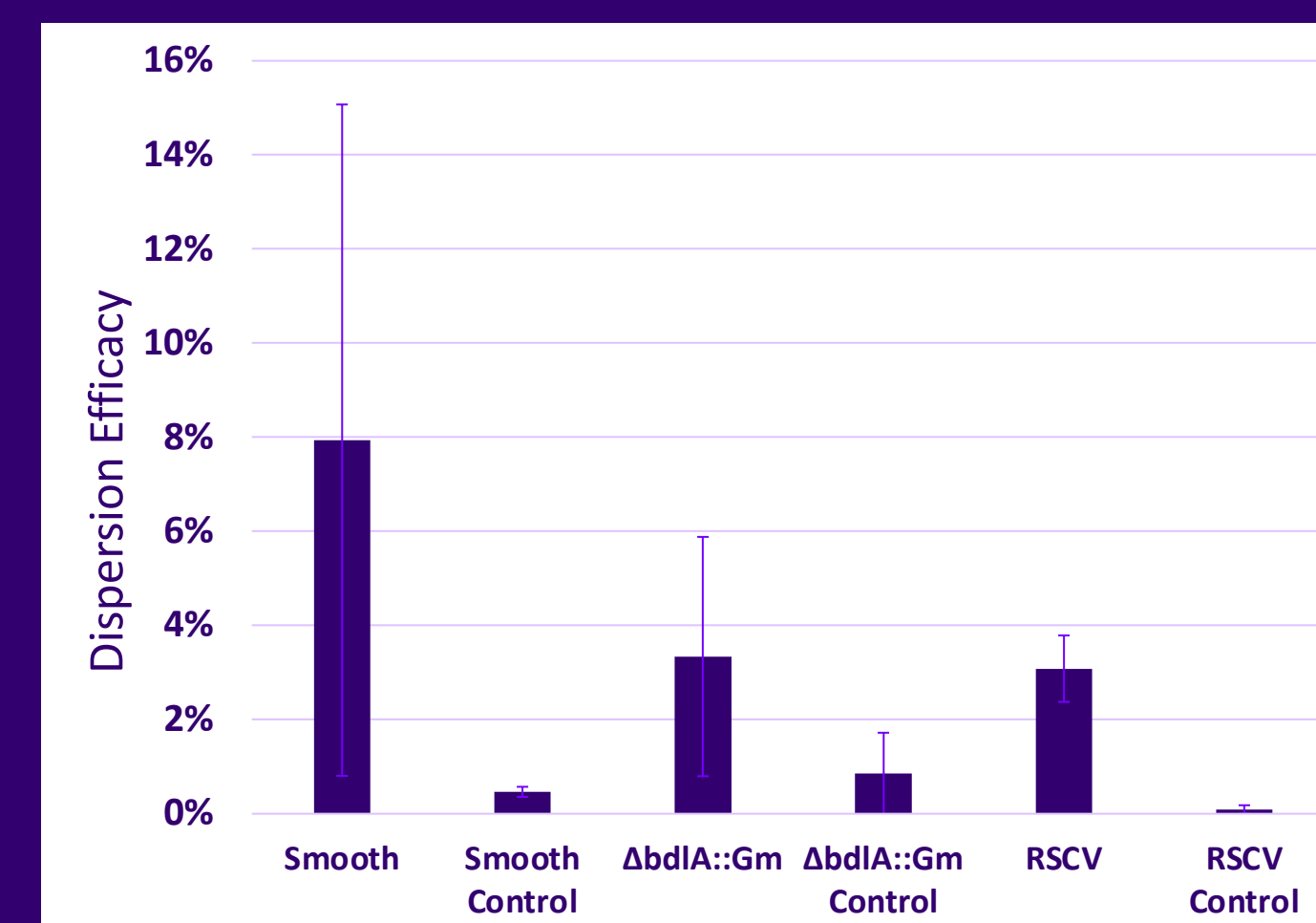
## Research Question and Results

*Pseudomonas aeruginosa* displays a unique phenotype called rugose small colony variants, also known as RSCVs. They are small, hard colonies that appear wrinkled under a microscope. It is known that they appear in cystic fibrosis patients<sup>4</sup>. My research investigates whether RSCVs disperse from biofilms.

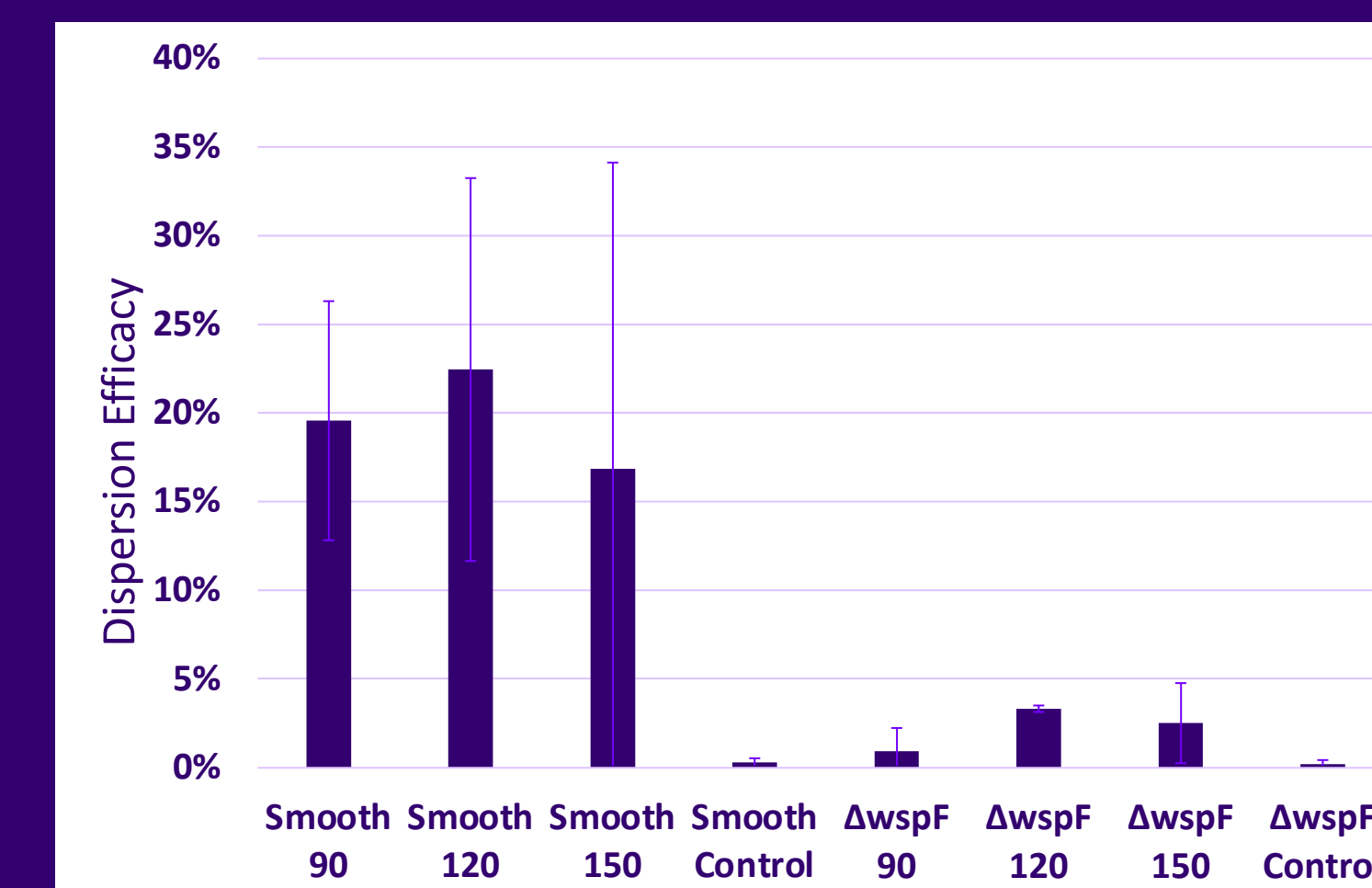


**Figure 3.** Smooth and RSCV colonies<sup>4</sup>. The image to the left is of a smooth colony and the image to the right is of a RSCV colony. All known information about *Pseudomonas aeruginosa* biofilms is based on the smooth colony. There is little information known about RSCV colonies. Colonies are sized at roughly 3 centimeters.

**Figure 4.** RSCVs do not form in agar and broth solutions. Over the course of five days, bacteria were cultured, serial diluted, and drop plated from agar and broth solutions in an evolution experiment. RSCVs did not form throughout the course of the experiment, indicating that RSCVs may only form in biofilms.



**Figure 5.** RSCVs release less bacteria. ΔbdIA::Gm forms both smooth and RSCV colonies. RSCV forms only RSCV colonies. ΔbdIA::Gm and RSCV released less bacteria than their parental control, Smooth, when dispersion was induced. This data suggests that RSCVs do not disperse. Error bars represent standard deviation.



**Figure 6.** RSCVs release less bacteria in extended dispersion conditions. ΔwspF forms RSCVs. Dispersion was induced with 90-minute, 120-minute, and 150-minute stop flow times. ΔwspF consistently released less bacteria than its parental control, Smooth. This data also suggests that RSCVs do not disperse. Error bars represent standard deviation.

## Summary

Dispersion is a growing area of interest as researchers believe it is at this stage of development that we can control biofilms. Biofilms appear everywhere, from the human body to hospital surfaces to the International Space Station. RSCVs are a gain-of-function phenotype that seemingly allow biofilms to attach better to their surfaces and avoid dispersion. It is important to understand how biofilms adapt to their environments as these adaptations may make biofilms even more difficult to control.

## Acknowledgements and References

I would like to thank Dr. Courtney Kleeschulte for allowing me to join her work and mentoring me throughout the program. I would also like to thank Dr. Matthew Parsek for his guidance and the Parsek Lab for their support. Lastly, I would like to thank the Washington NASA Space Grant for funding this opportunity.

- <sup>1</sup> CDC. 2019 Nov 6. *Pseudomonas aeruginosa* Infection.
- <sup>2</sup> Rumbaugh K, Sauer K. 2020. Biofilm dispersion. *Nature Reviews Microbiology*.
- <sup>3</sup> Created in Biorender
- <sup>4</sup> Harrison J, et al. 2020. Elevated exopolysaccharide levels in *Pseudomonas aeruginosa* flagellar mutants have implications for biofilm growth and chronic infections. *PLOS Genetics*.